

雲仙の  
湯守の宿に ひと夜寝て  
歌なとおもふ 旅つかれかも



After a night's sleep in Unzen Yumori no Yado,  
I thought of a poem, perhaps from my weary travels


創業元禄八年 雲仙湯守の宿

雲仙国立公園




湯元ホテル

Unzen National Park Established in 1695, Unzen Yumori no Yado Yumoto Hotel



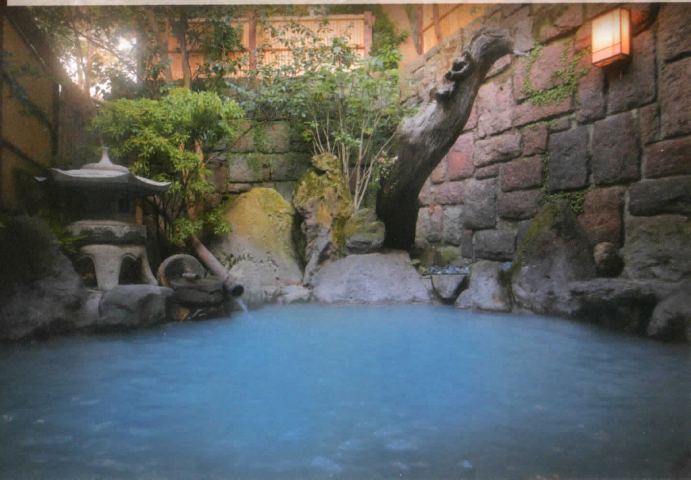
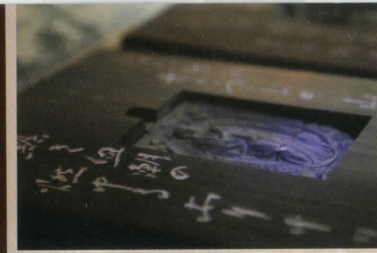
## 1695年創業の歴史と伝統を物語る くつろぎの空間

別名「湯守の宿」と称され、元禄8年(西暦1695年)に雲仙で最初の宿泊施設として誕生しました。明治時代から昭和初期にかけて、雲仙温泉は外国人の避暑やリゾート地として大変にぎわいました。当館から徒歩2分にある「雲仙地獄」からは温泉が湧き出し、噴気孔から真っ白い水蒸気もくもくと上がっています。源泉掛け流しの豊富な湯が注がれ、効能豊かな温泉をご堪能いただけます。



With history and tradition dating back to its establishment in 1695  
A Relaxing space

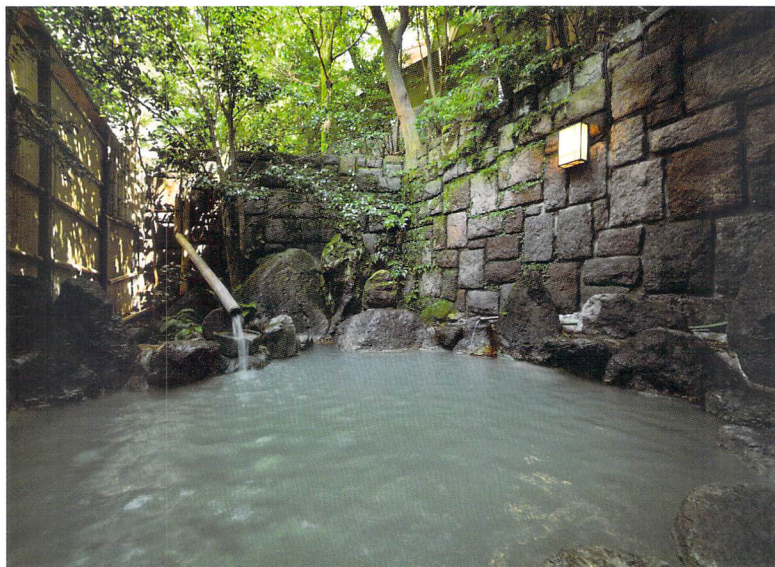
Yumoto Hotel, which is also known as Yumori no Yado (The Inn that keeps watch over the hot spring), was established in 1695 as the first lodging facility in Unzen. From the Meiji period to the early Showa period, Unzen Hot Springs was visited by foreign tourists as a resort and a summer retreat. Just a 2-minute walk away from the hotel you can find the 'Unzen Jigoku', the original source of the hot spring with its pure white steam billowing up from the fumaroles. You can enjoy the full benefits of the spring, being so abundant with free-flowing warm water.





湯番さんが守り抜いている  
三百年以上続く伝統の湯

江戸時代から現在まで湯番さんが、日々当館の源泉温度を管理し、快適なお風呂の温度調整を手作業で行っている貴重な温泉です。白濁色の源泉は、効能豊かな硫黄の成分が濃い証として「美肌の湯」などとも称される所以です。



露天風呂 | Open-air bath

Bathing attendants and their protecting the springs  
A tradition that extends over three centuries

The hot spring is an extremely precious one. Since the Edo period, a bathing attendant has managed the source water temperature in the hotel on a daily basis and has kept the temperature of the bath comfortable, all by hand. The white, turbid source water contains highly-concentrated sulfur components with health benefits, which is why the hot spring is also called "hot spring for beautiful skin."



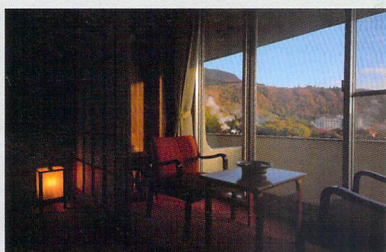
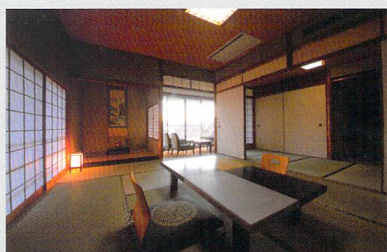
大浴場 | Large bath



ゆっくりと身も心も解きほぐす  
安らぎのひとつとき

日本伝統の和室でゆったりと手足を伸ばして長旅の疲れを癒し、やすらぎの時間をお過ごしください。

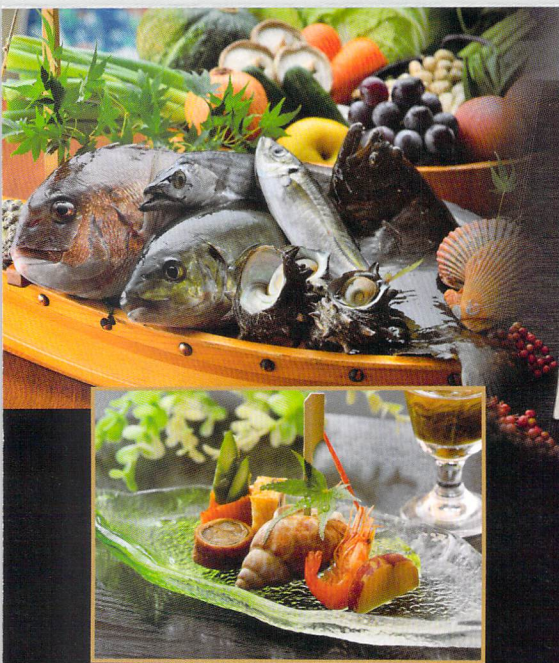
[客室数 全44室]



Tranquil moments that gently relax  
your body and mind

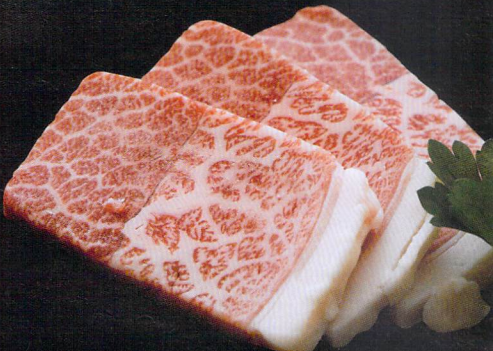
In a traditional Japanese-style room, you can take your time to relax while stretching out to relieve your travel fatigue.

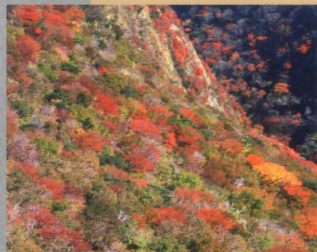
Guest rooms: 44



島原半島は農業や漁業が盛んで、地元の新鮮な野菜や肉や魚を使った、和風会席料理をご堪能いただけます。

The major industries of the Shimabara Peninsula are agriculture and fishery, meaning that you can enjoy Japanese-style Kaiseki cuisine which use fresh local vegetables, meat and fish.





交通アクセス | Access



福岡 | FUKUOKA

東京 | TOKYO

長崎・雲仙市 |  
UNZEN City, NAGASAKI

雲仙国立公園

 湯元ホテル

〒854-0621 長崎県雲仙市小浜町雲仙316 TEL 0957-73-3255 FAX 0957-73-2126  
316 Unzen, Obama-cho, Unzen-city, Nagasaki 854-0621, JAPAN TEL 0957-73-3255