



交通のご案内

出雲空港より車で10分
山陰道穴道ICより車で15分
一畑電鉄、雲州平田駅より徒歩10分

Our Location:

10 min. from Izumo Airport by car,
15 min. from San'in Express Way, Shinji I.C. by car,
10 min. Ichibata Electric Railway Line, Unshu-Hirata Station on foot.



Hirata MAPLE Hotel

〒691-0001 島根県出雲市平田町2451
2451 Hirata-cho, Izumo City, Shimane Prefecture 691-0001

TEL0853-62-0770 FAX0853-62-0771

phone +81-853-62-0770 FAX +81-853-62-0771

<http://www.hirata-maple.co.jp>



WEB SITE

ホームページから予約できます。 You can make a reservation online.



Hirata MAPLE Hotel

ひらたメイプルホテル



歴史と美しい自然に抱かれた水都「平田」

ゆったりやすらげる

心地よい静けさをご提供いたします。

ビジネスや観光などに幅広くご利用いただけます。

Our hotel is in the Hirata district of Izumo City.

Hirata served as a lively hub for cotton trading in earlier times and has been noted for its beautiful waterfront sceneries.

We welcome guests with calm and pleasant atmosphere.

Our location is convenient for business, sightseeing and a wide range of others purposes.

Quiet and Convenient Location

Our location is convenient for both business and sightseeing purposes. It takes about 30 minutes by car from our hotel to the city centers of both Izumo and Matsue. In the vicinity, there are several restaurants and an onsen hot spring spa where you can refresh your body and mind.

静かで便利なロケーション

出雲市街、松江には
いずれも30分ほどでアクセス可能な好立地。
周辺には温泉施設や飲食店もありますので
ビジネスや旅での疲れを
ゆっくりと癒すことができます。



T
2階
nd Fl

1
ンデ
ーム
ndice

レス
のスマ

g a
also
oriva

Hirata
MAPLE
Hotel

ひらたメイプルホテル

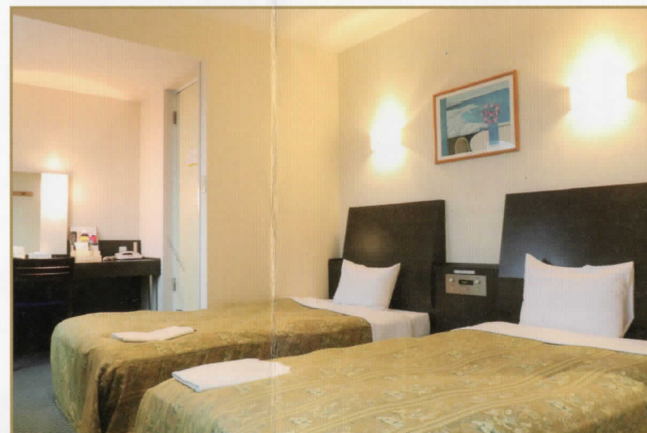
IN
←

忙しい日常から離れて静かな空間が訪れる
きめ細やかな心配りで
やすらぎの時間がながれる
そんな時間と空間がここに 있습니다

Our warm hospitality offers guests
comfortable and relaxing time
away from the bustle of everyday life.



シングルルーム Single Room



ツインルーム タイプA Twin Room A



ツインルーム タイプB Twin Room B



We provide guests
a comfortable stay.

周辺
観光地
Nearby
Sightseeing
Spots



源泉掛け流し

中国地方最大級の「天然温泉掛け流し」温泉施設。一歩足を踏み入ると、それは風情たっぷりの異空間。さまざまなスタイルのお風呂をお楽しみいただけます。館内にはレストラン、宴会場、風呂付きの個室もございます。平田橋縫に生まれた癒しのスポットです。

Japanese Restaurant & Onsen Hot Spring Spa Yurari

Yurari is a hot spring spa with several kinds of public baths, including a large outdoor bath where visitors feel like they are bathing in a Japanese garden. It also has a restaurant serving authentic Japanese dishes, a banquet room and rooms with a private bath.



一畑薬師
「目のお薬師様」として古くから全国的に知られ、1300段余りの石段(参道)でも有名。
Ichibata Yakushi Temple
Ichibata Yakushi is a center of faith worshipping a Buddhist deity who cures any kind of eye problems. The temple is located on the top of Mt. Ichibata (200m high) and famous for its approach to the temple which consists of nearly 1300 stone steps.



鰐淵寺
弁慶伝説が残る、海に近い山岳に建てられた天台宗の古刹。境内のみみじは山陰屈指の紅葉として知られる。
Gakuen-ji Temple
It is said that a legendary hero Benkei trained himself here at Gakuen-ji temple when he was young. The precinct of the temple is one of the most popular autumn leaves viewing spots in the San'in region.



鳥根ゴルフ倶楽部
池あり、谷ありの難ホールや思いきり飛ばせるロングホールなどあり、クラブハウスからの望む穴道湖の景色も魅力。
Shimane Golf Club
Shimane Golf Club has difficult holes with ponds and rolling hills. It also has several long holes. Its clubhouse commands a fine view of Lake Shinji.



出雲大社
縁結びの神様として有名。大黒様・大国主大神を祀る古社。大社造の本殿は国宝に指定。
Izumo Taisha Shrine
Izumo Taisha Shrine is known nationwide as the god of match making. It enshrines Okuninushi-no-Okami who is believed to be a deity who worked hard and developed ancient Japan and made it a wealthy land.